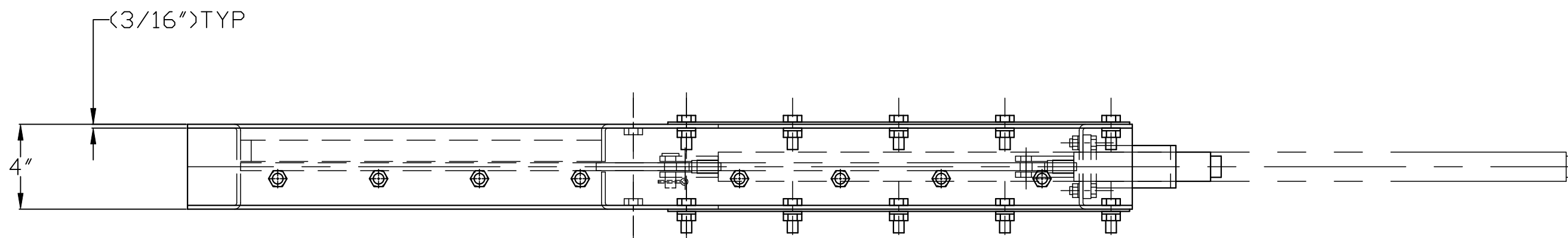


NOTE:
 1) APPROX. WEIGHT 175 LBS.
 2) MAXIMUM OPERATING TEMP 450°F.
 3) FOR REFERENCE ONLY.



REVISIONS			
WM. W. MEYER & SONS, INC. LIBERTYVILLE, ILLINOIS			
16X16 MANUAL T-BAR MAINTENANCE GATE SQUARE FLANGE			
OUR S.D. NO.		REF. S.D. NO.	
DRAWN	CZ	DATE	9-30-87
APPROVED	MRD	SCALE	3/16
			DRAWING NUMBER 430L-181