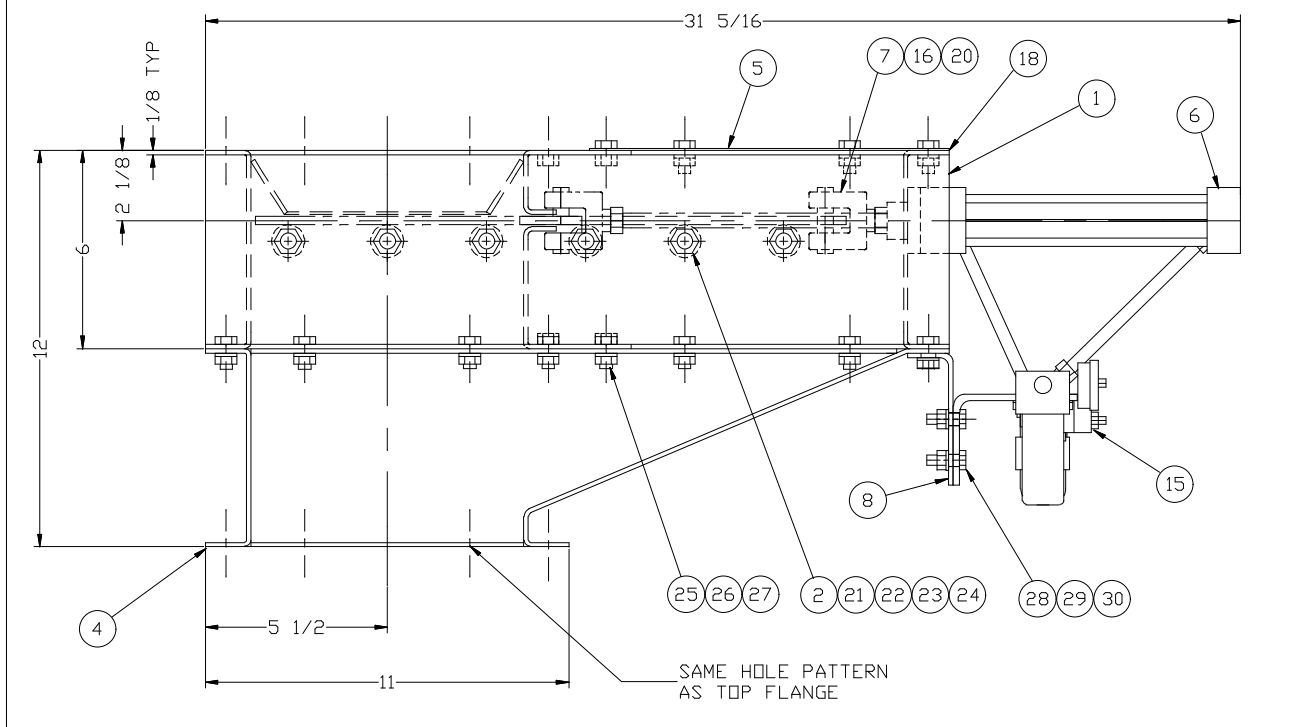


MATERIAL LIST			
ITEM	PART NO.	DESCRIPTION	QTY.
1	431Y-142	HOUSING	1
2	431Y-592	SLIDE PLATE GUIDE	12
3	431Y-145	SLIDE PLATE	1
4	431Y-168	TRANSITION - DUST TIGHT	1
5	431Y-144	TOP PLATE	1
6	450VC022	AIR CYLINDER - 2" BORE X 8" STROKE	1
7	450VC025	CLEVIS	1
8	431Y-211	BRACKET	1
9	450PK273	FILTER, REGULATOR, LUBRICATOR	1
10	450PA033	90° TUBING ELBOW (3/8 TUBE - 3/8 MPT)	2
11	450PK549	NIPPLE - 1/4" X 4" LG.	1
12	450P-008	TUBING - 3/8" O.D. NYLON	4 FT.
13	450PK279	NIPPLE - 1/4" X 2 1/2" LG.	1
14	450PA032	90° TUBING ELBOW (3/8 TUBE - 1/4 FPT)	1
15	450LE039	SOLENOID VALVE SERIES 700 W/FLOW CONTROL	1
16	450VC027	PIN W/SNAPS	1
17	450PA031	90° TUBING ELBOW (3/8 TUBE - 1/4 MPT)	1
18	450BB030	GASKET - FOAM	9.25 FT.
19	450PK242	BRACKET - F,R,L	1 SET
20	450JH200	7/16-20 JAM NUT	1
21	450A-010	BRONZE BUSHING	12
22	450JH171	1/2-13 X 2" LG. B.H.C.S.	12
23		1/2 FLATWASHER	12
24		1/2-13 NUT	12
25		3/8-16 X 1 1/4" LG. H.H.C.S.	20
26		3/8 LOCKWASHER	18
27		3/8-16 NUT	18
28		5/16-18 X 1" LG. H.H.C.S.	4
29		5/16 LOCKWASHER	4
30		5/16-18 NUT	4



REVISIONS			
I	4-2-98	REDRAWN ON CAD	BB
H	9-4-92	ITEM 15 WAS 450LE010	HS
G	10-3-91	ADDED JAM NUT	DK
F	5-15-91	REMOVED ITEM 22	DRP
E	12-14-88	ITEM 23 WAS ITEM 10	DRP
D	8-3-88	ADDED ITEM 23	DRP
C	1-26-88	16 HOLES WERE QTY 8	DRP
B	8-15-85	ADDED ITEM 22, ITEM 17 QTY 14 WAS 1	NCZ
A	2-20-85	P/N 431Y-091 WAS 431Y-319	HS

WM. W. MEYER & SONS, INC.
SKOKIE, ILLINOIS

8 X 8 AIR OPERATED SLIDE GATE ASSEMBLY - 2" BORE X 8" STROKE

OUR S.D. NO.		REF. S.D. NO.	
DRAWN HMS	DATE 1-15-85	DRAWING NUMBER	
APPROVED MRD	SCALE 3/8	431Y-100	

M:\SlideGate\08X08AO\SGW.T.DWG